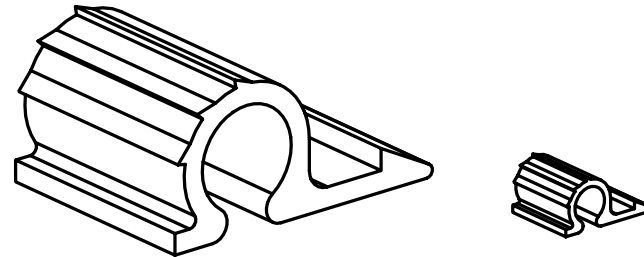
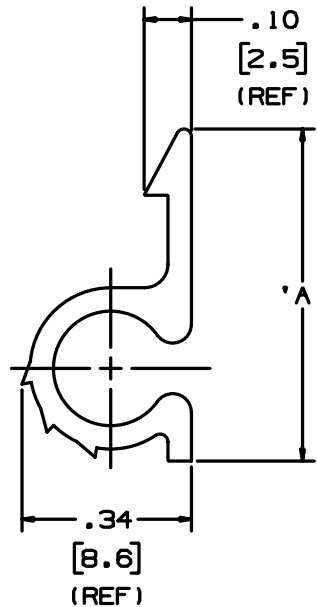
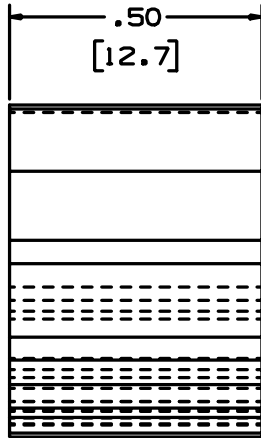


THIS COPY IS PROVIDED ON A RESTRICTED BASIS AND IS NOT TO BE USED IN ANY WAY DETRIMENTAL TO THE INTERESTS OF PANDUIT CORP.

PANDUIT PART NO.	DIMENSIONS	BUNDLE DIAMETER (SEE NOTE 3)	MATERIAL	WEIGHT lbs 100 (g) pcs.
	'A'			
HSC.25-__	0.70 (18.0)	0.25 (6.35)	NYLON 6/6	0.13 (59)
HSC.25-__100	0.68 (17.3)		WEATHER RESISTANT POLYPROPYLENE	



NOTES:

- SEE CURRENT PRICE SHEET FOR PART NUMBER SUFFIX DESIGNATION FOR PACKAGE SIZE AND PART COLOR.
- DESIGNED FOR USE ON ALUMINUM AND STEEL SIDING WITH THE PITTSBURGH INTERLOCK TYP LAP JOINT.
- RECOMMENDED FOR INSTALLATION OF 1/4" DIA RG59/U AND RG6/U TYPE COAXIAL CATV CABLE.

DIMENSIONS IN BRACKETS ARE METRIC [mm]			
CAD FILENAME/LAYERS		G00239LB_PB_HSC25_00	
PANDUIT CORP. TINLEY PARK, ILLINOIS			
HORIZONTAL SIDING CLIP HSC.25-___			
UNLESS OTHERWISE SPECIFIED, DIMENSIONAL TOLERANCES ARE: (.X) ±0.05 (1.3) (.XXX) ±0.010 (0.25) (.XX) ±0.02 (0.5) ANGLES ± 5°		UNLESS OTHERWISE SPECIFIED, ALL DIMENSIONS ARE GIVEN IN INCHES, THIRD ANGLE PROJECTION.	
DRAWN BY JAD	MAT'L:	SCALE NONE	
DATE 2/11/04	SEE TABLE	DRAWING NO.	DWG SIZE
CHK'D		G00239LB	A

REV	DATE	BY	CHK	DESCRIPTION	ECN - R	CUST	SUP
R	2/11/04	JAD		INITIAL RELEASE	G00239CJ	1	